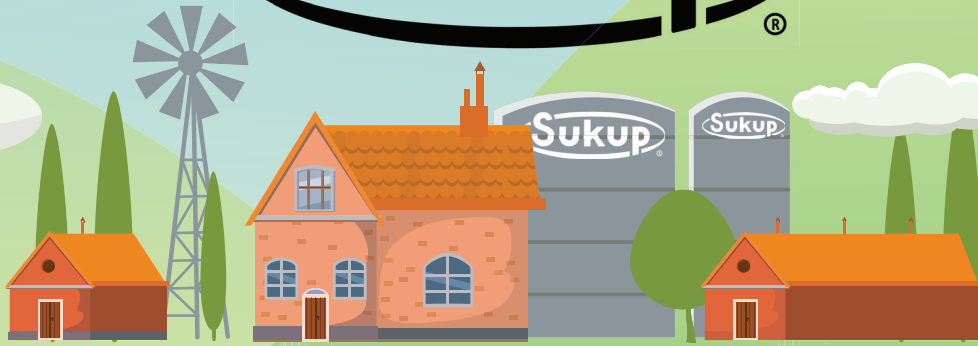




Meet the Bin Family

Activity Book

FARM SAFETY TIPS *from* Sukup®



**always wear a seatbelt
on tractors and skid steers**



**wash your hands before entering and
leaving an area with animals**



**always wear the correct
protective equipment at all times**



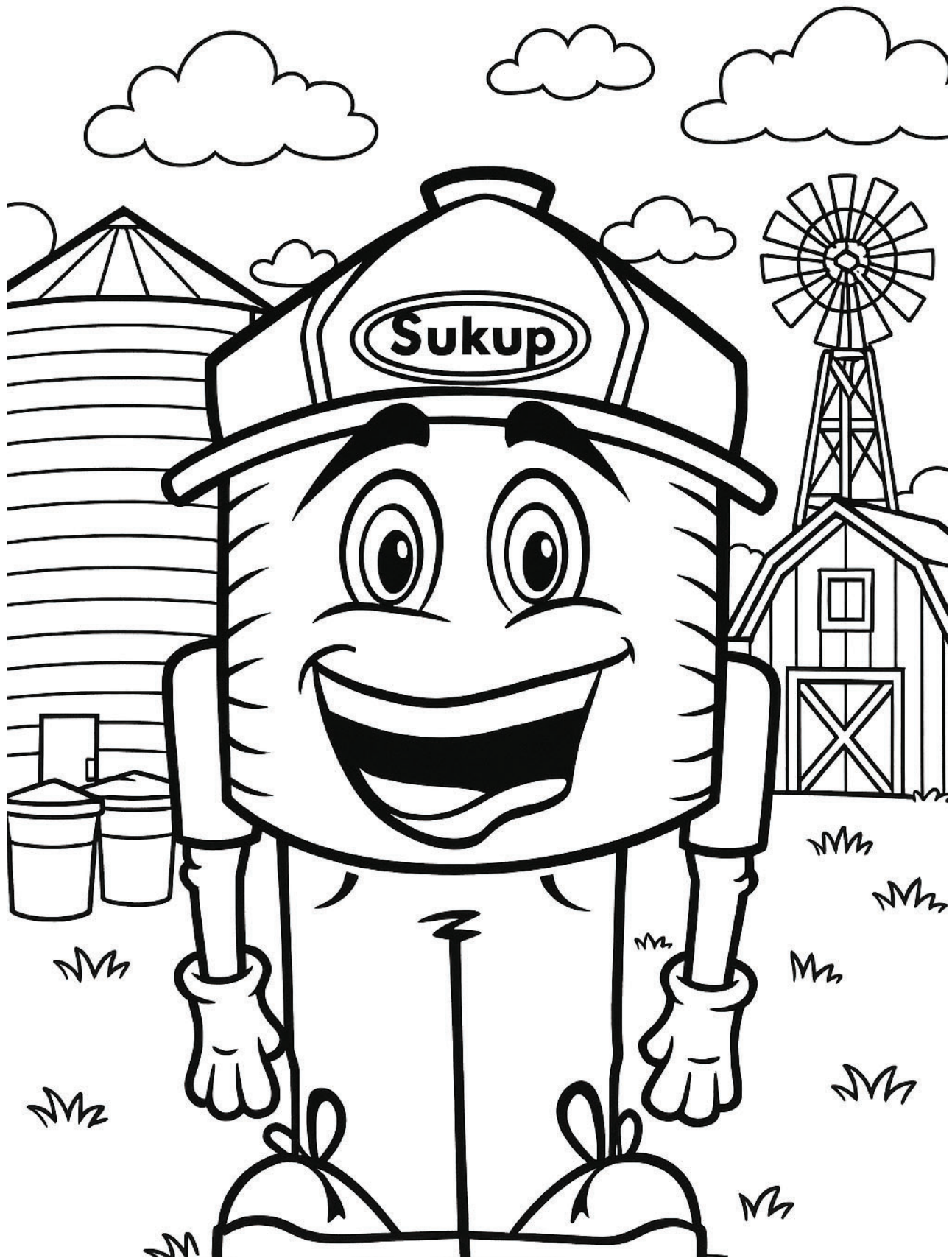
**clean dirty footwear and pushchair
wheels as soon as you can**



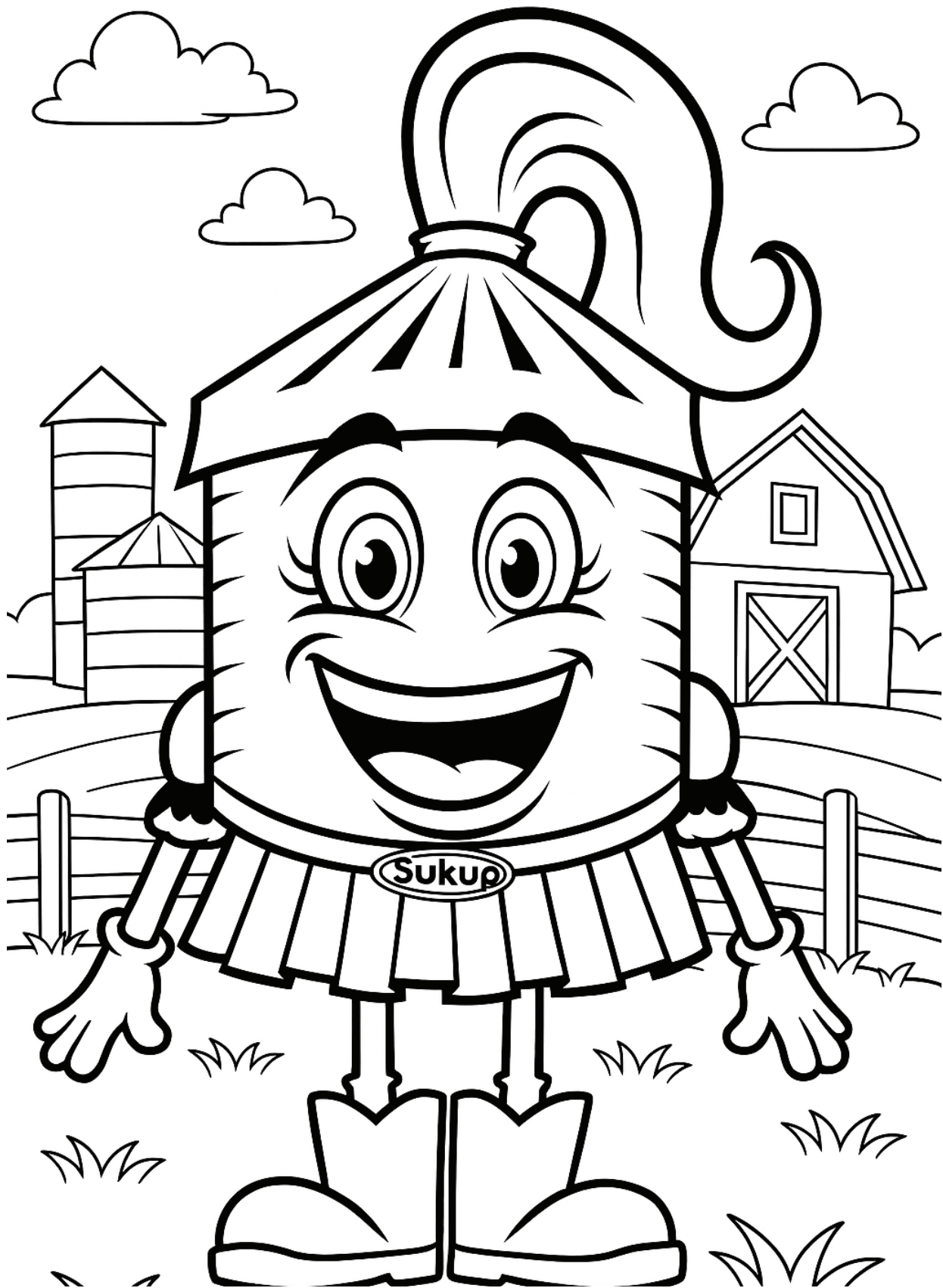
**children should always be supervised
by an adult in farm environments**



**do not eat food or drink
while in animal feeding areas**

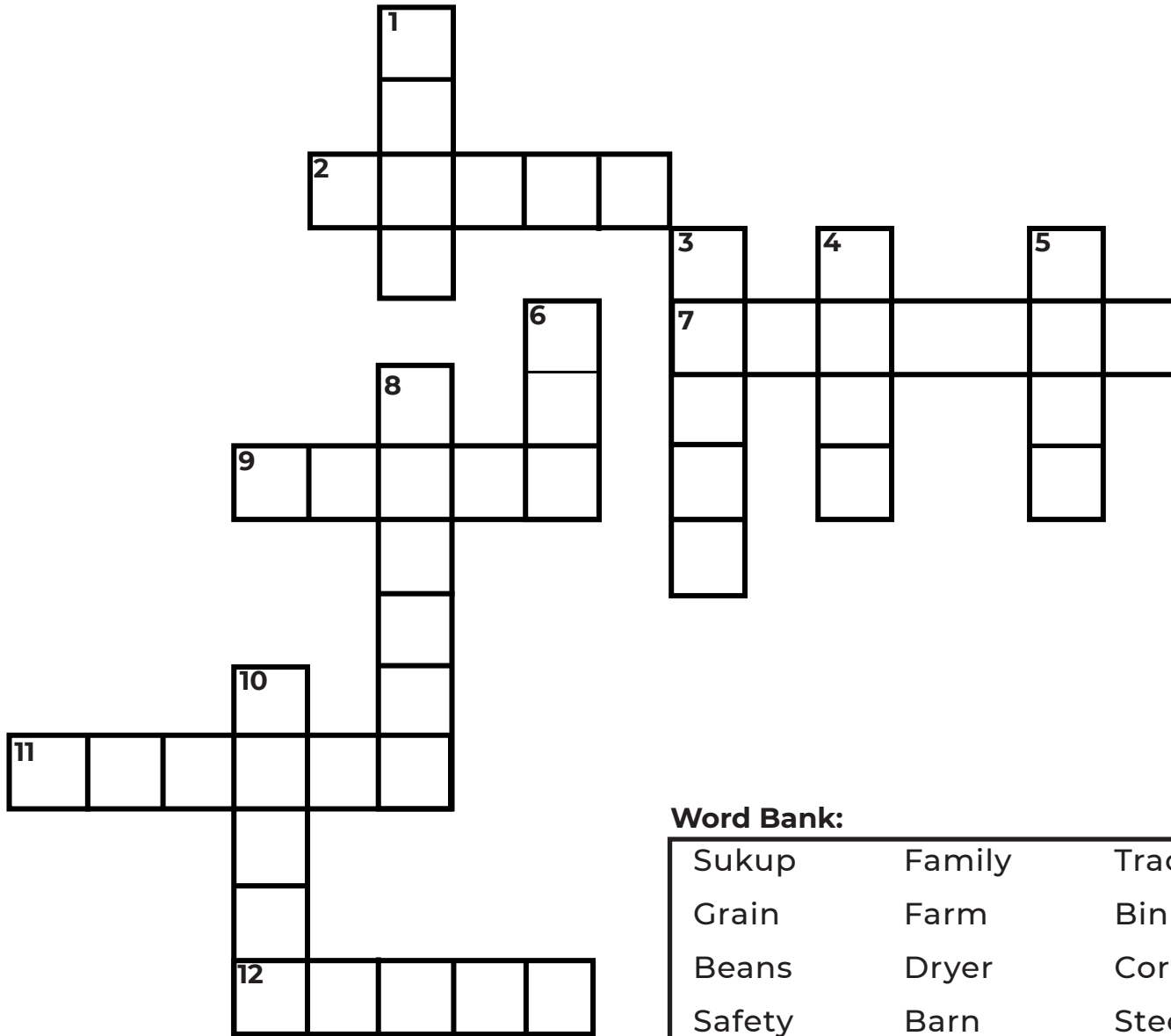


Ben the Bin



Holly the Hopper

CrossBin Puzzle



Word Bank:

Sukup	Family	Tractor
Grain	Farm	Bin
Beans	Dryer	Corn
Safety	Barn	Steel

Down:

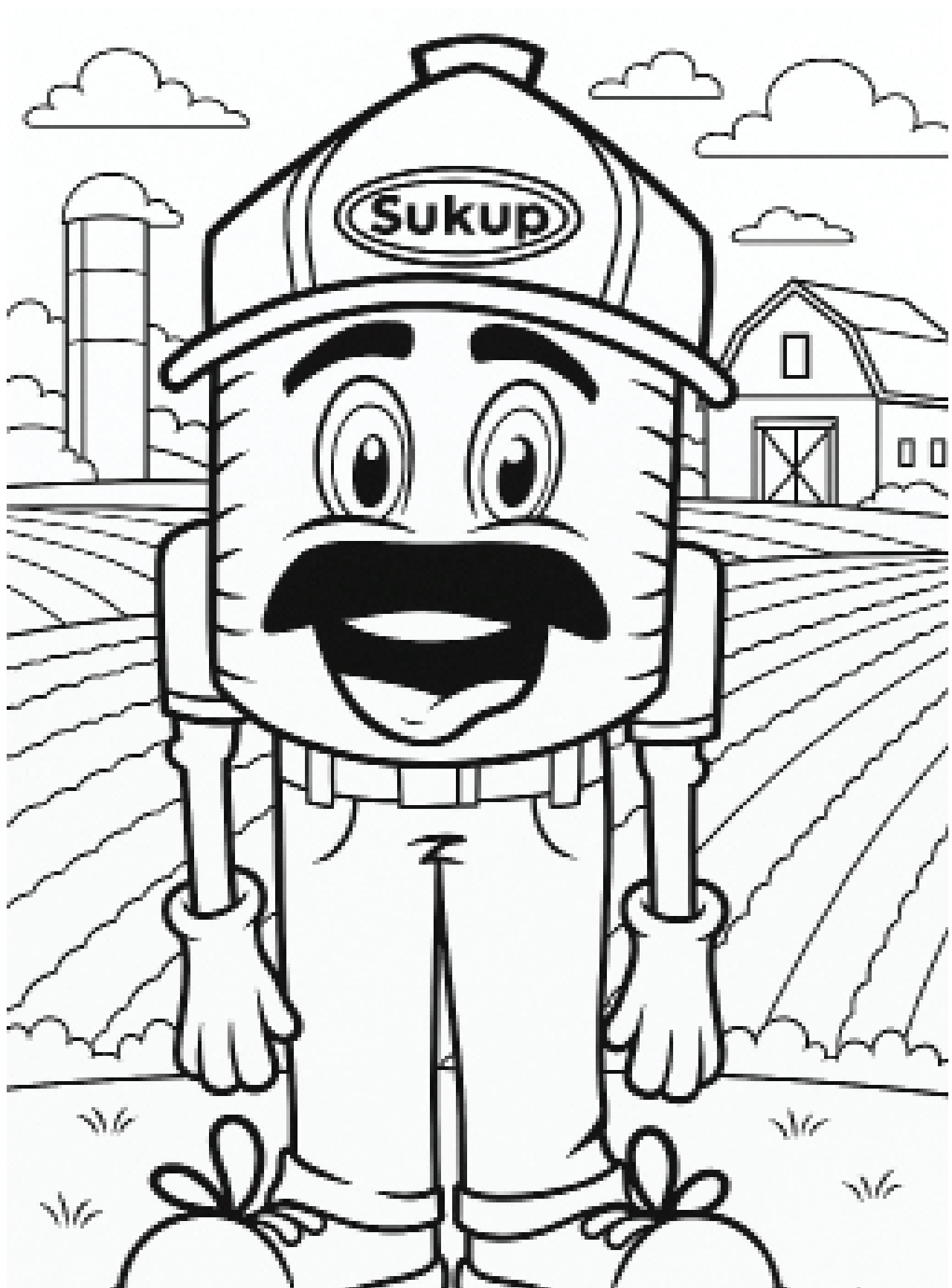
1. What is a big red building called?
3. What shiny metal is used to make grain bins?
4. Where does Ben live?
5. Yellow food that comes on a cob is called..?
6. What is a big container called that holds grain on the farm?
8. Who are the people you love most?
10. Which seeds are grown in a pod? (Corn or Beans?)

Across:

2. What machine dries grain so it's not wet?
7. What does Dad use in the feild?
9. What do bins store?
11. What do we always need to remember if we are outside on the farm?
12. What company makes storage containers for grain?



Mom



Dad



GrandBin

Bin-tastic Word Hunt!

L T D R Y E R L J F
Z R G N B F A R M A
H A Q R L J Z C S M
O C S J A F P D U I
P T T F A I T H K L
P O E B E A N S U Y
E R E B A V F W P Q
R Q L N Y F B P C E
I F S R Z K H I R R
D C O R N Q Y H N U

Word Bank:

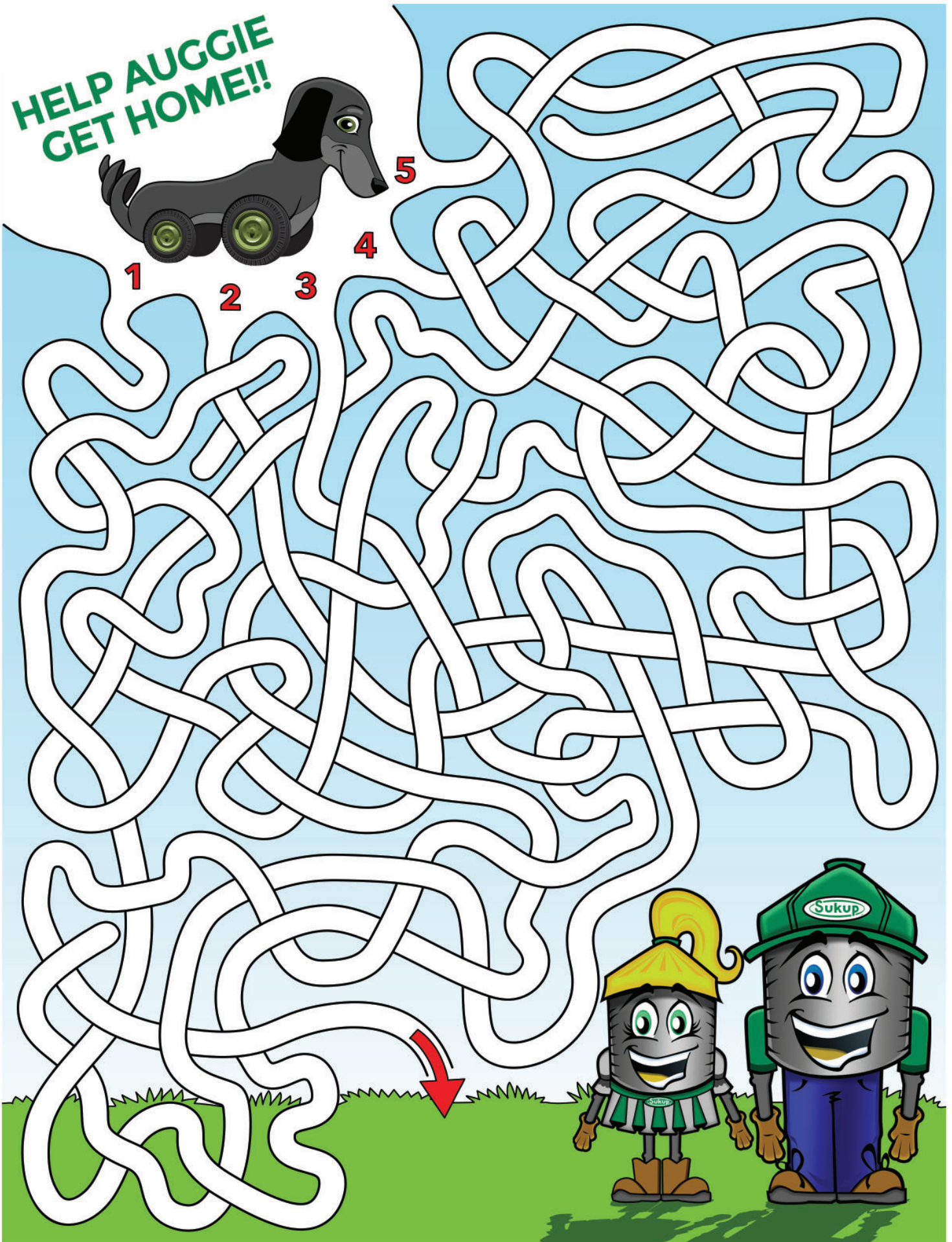
**Tractor
Steel
Farm**

**Family
Beans
Dryer**

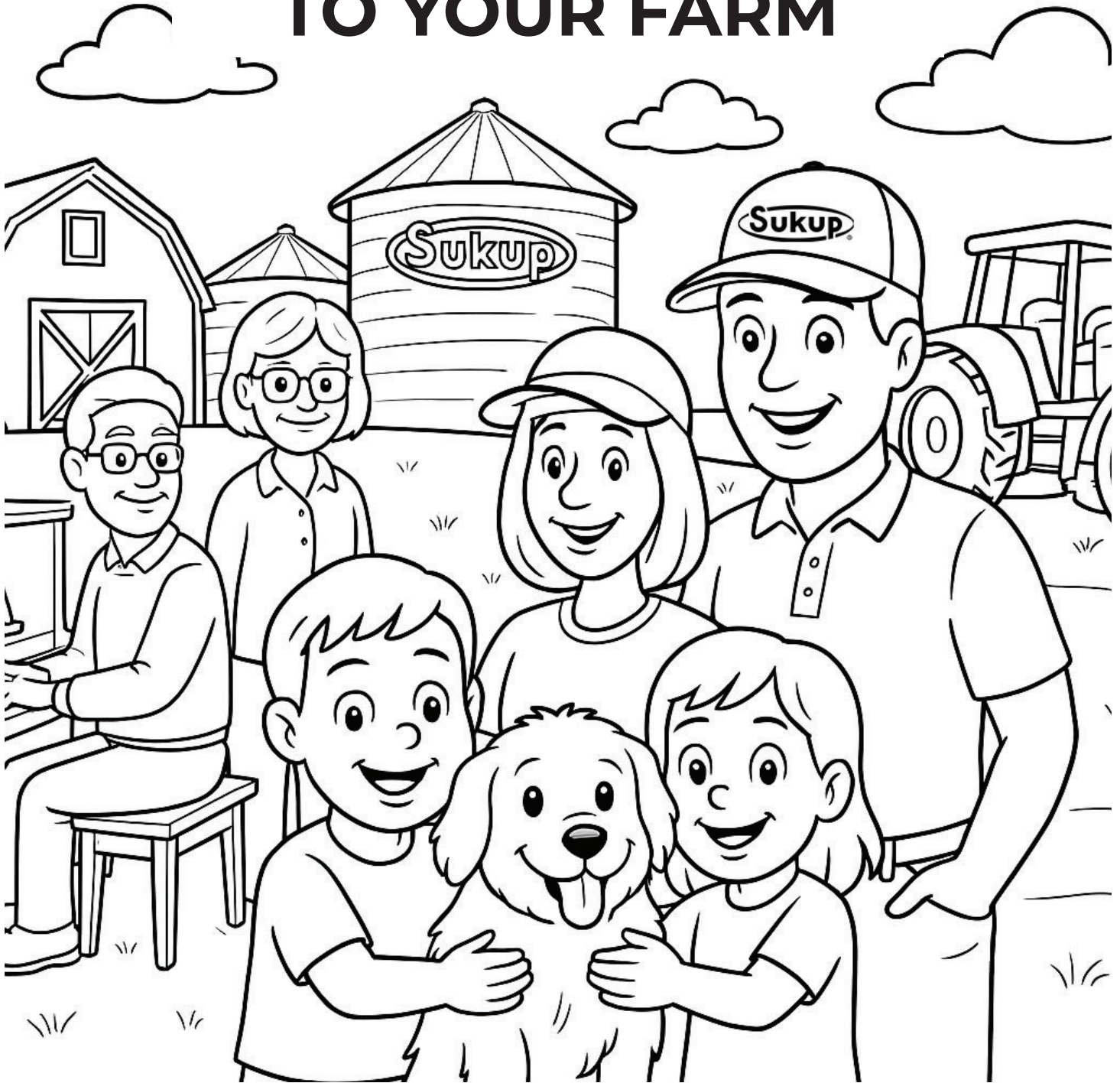
**Sukup
Grain
Hopper**

**Faith
Corn
Bin**

HELP AUGGIE
GET HOME!!



FROM OUR FAMILY TO YOUR FARM



Did you know?

- Sukup was founded in 1963
- 4 generations actively involved in the company.
- We have products in over 85 countries.
- We even made the two biggest grain bins ever — each one can hold 2.25 million bushels of grain! That's like filling 90 school buses with corn!